

The EPIC Centre

invites you to attend a seminar on

The Passionate Mind: How Individuals with Autism Learn

with

Dr Wendy Lawson and Ms Robyn Steward

Monday, 15th November 2010, from 9.30am to 12.00pm

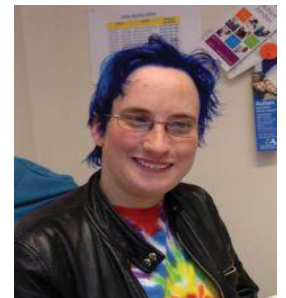
at RMIT, Plenty Road, Bundoora

About the Presenters



Wendy Lawson is an adult with high functioning autism. As well as presenting internationally and publishing many journal articles, Wendy has written nine books varying from her autobiography to an everyday text on autism. Wendy's work explores the influence of the neurological development in individuals with autism with reference to its impact upon learning styles. As a writer, poet and adult educator, Wendy is well known both in the Northern and Southern hemispheres. Becoming a psychologist and sharing her knowledge, understanding and experience of life encounters, including autism and Asperger's diff-abilities, is an ongoing journey that Wendy welcomes.

Robyn Steward lives in London, UK and has Asperger's Syndrome along with several other disabilities. She is an acclaimed artist, as well as operating her own business as an autism consultant. Robyn aims to provide training from a person not just a textbook. She draws on her experiences as well as those of others. Robyn has toured the US, appeared on Channel 4 and BBC news programs, and has also spoken at the House of Commons. She was a recipient of the Charlie Bayne Award in 2008 which enabled her to travel to the US and speak at UCLA. Her artwork has been published in the Sunday Times and The Guardian and she has a piece displayed in New York City. This will be her first visit to Australia and she is very excited to be working with Wendy.



Topics

- ASD, school and the Teachers Tool Kit
- Exclusion or Inclusion – what do they really mean?
- An exploration of autistic spectrum (AS) and neurotypical (NT) learning styles

To register, complete the registration form over the page and post with your payment to EPIC, PO Box 1094, Bundoora, Victoria, 3083

ENQUIRIES: SANDRA SARTOR
Phone: 9466 9022
Fax: 9467 8442
Email: sandra.sartor@rmit.edu.au

